

D

C

B

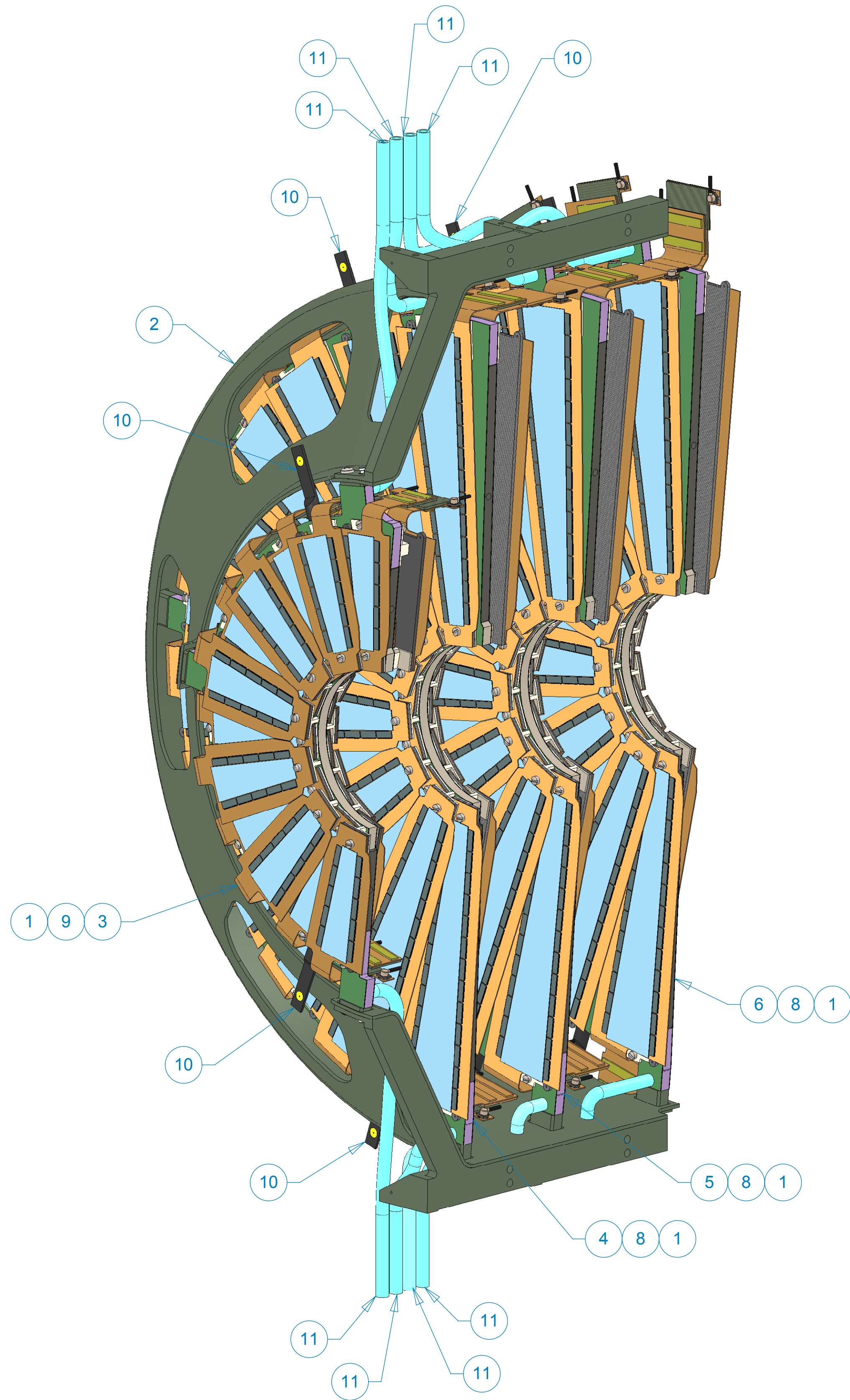
A

D

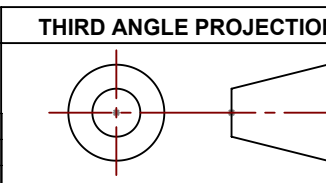
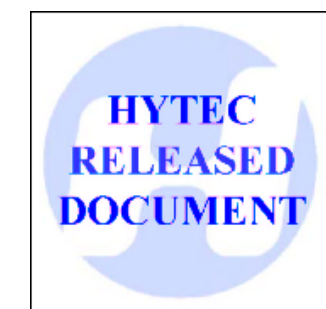
C

B

A



CABLE EXTENSIONS NOT SHOWN



THIS DOCUMENT CONTAINS INFORMATION THAT IS THE PROPRIETARY PROPERTY OF HYTEC, INC.  
REPRODUCTION, DISCLOSURE, OR RELEASE TO OTHERS, MANUALLY OR ELECTRONICALLY,  
IS STRICTLY PROHIBITED WITHOUT THE PRIOR WRITTEN CONSENT OF HYTEC, INC.

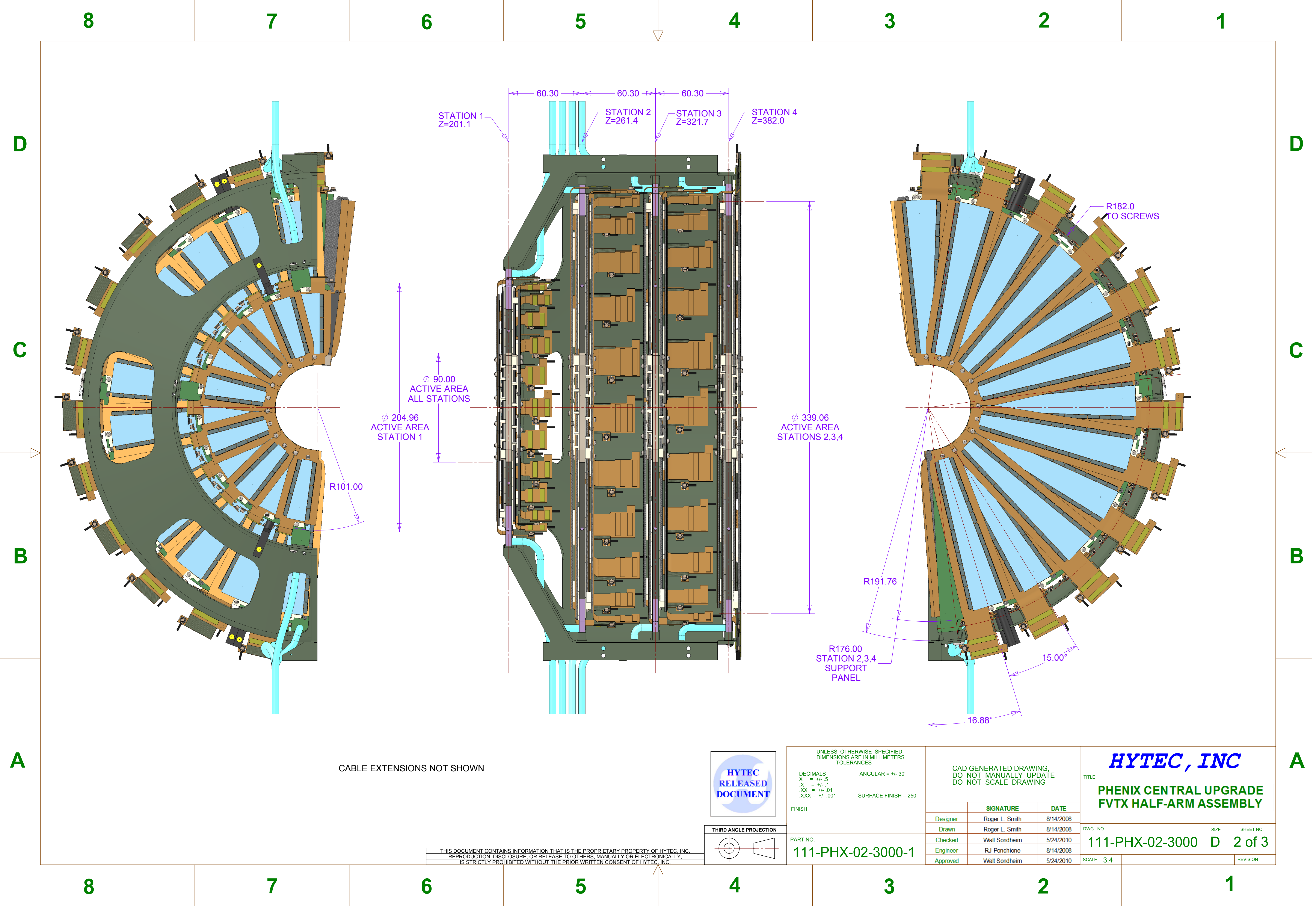
REVISIONS				
REV.	ZONE	DESCRIPTION	DATE	APPROVED

PARTS LIST				
ITEM NO.	QTY.	PART NO.	DESCRIPTION	MATERIAL
1	12	111-PHX-02-3001-1	FVTX Disk Extractable Locating Pin	
2	1	111-PHX-02-3100-1	FVTX Cage Bonded Assembly	
3	1	111-PHX-02-3200-1	FVTX Half Station 1 Assembly	
4	1	111-PHX-02-3300-1	FVTX Half Station 2 Assembly	
5	1	111-PHX-02-3400-1	FVTX Half Station 3 Assembly	
6	1	111-PHX-02-3500-1	FVTX Half Station 4 Assembly	
7	1	111-PHX-02-4000-1	FVTX Bigwheel Assembly	
8	9		Phillips Pan Hd Screw, #4-40 UNC-2A X 5/8 lg	SST
9	3		Phillips Pan Hd Screw, #4-40 UNC-2A X 3/8 lg	SST
10	8		Optical Theodolite Target	
11	AR		Flexible Cooling Tube	

UNLESS OTHERWISE SPECIFIED: DIMENSIONS ARE IN MILLIMETERS -TOLERANCES-		CAD GENERATED DRAWING. DO NOT MANUALLY UPDATE DO NOT SCALE DRAWING	
DECIMALS X = +/- .5 .X = +/- .1 .XX = +/- .01 .XXX = +/- .001	ANGULAR = +/- 30°  SURFACE FINISH = 250		
FINISH		SIGNATURE	DATE
		Designer Roger L. Smith	8/14/2008
		Drawn Roger L. Smith	8/14/2008
		Checked Walt Sondheim	5/24/2010
		Engineer RJ Ponchione	8/14/2008
		Approved Walt Sondheim	5/24/2010

HYTEC, INC		
TITLE PHENIX CENTRAL UPGRADE FVTX HALF-ARM ASSEMBLY		
DWG. NO. 111-PHX-02-3000	SIZE D	SHEET NO. 1 of 3
SCALE 3:4	REVISION	

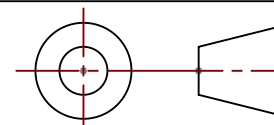




CABLE EXTENSIONS NOT SHOWN

HYTEC  
RELEASED  
DOCUMENT

THIRD ANGLE PROJECTION



THIS DOCUMENT CONTAINS INFORMATION THAT IS THE PROPRIETARY PROPERTY OF HYTEC, INC.  
REPRODUCTION, DISCLOSURE, OR RELEASE TO OTHERS, MANUALLY OR ELECTRONICALLY,  
IS STRICTLY PROHIBITED WITHOUT THE PRIOR WRITTEN CONSENT OF HYTEC, INC.

UNLESS OTHERWISE SPECIFIED:  
DIMENSIONS ARE IN MILLIMETERS  
-TOLERANCES-

DECIMALS  
X = +/- .5  
.X = +/- .1  
.XX = +/- .01  
.XXX = +/- .001

ANGULAR = +/- .30°  
SURFACE FINISH = 250

FINISH

PART NO.

111-PHX-02-3000-1

CAD GENERATED DRAWING.  
DO NOT MANUALLY UPDATE  
DO NOT SCALE DRAWING

	SIGNATURE	DATE
Designer	Roger L. Smith	8/14/2008
Drawn	Roger L. Smith	8/14/2008
Checked	Walt Sondheim	5/24/2010
Engineer	RJ Ponchione	8/14/2008
Approved	Walt Sondheim	5/24/2010

**HYTEC, INC**

TITLE  
**PHENIX CENTRAL UPGRADE  
FVTX HALF-ARM ASSEMBLY**

DWG. NO. SIZE SHEET NO.

111-PHX-02-3000 D 2 of 3

SCALE 3:4 REVISION



8 7 6 5 4 3 2 1

D

D

C

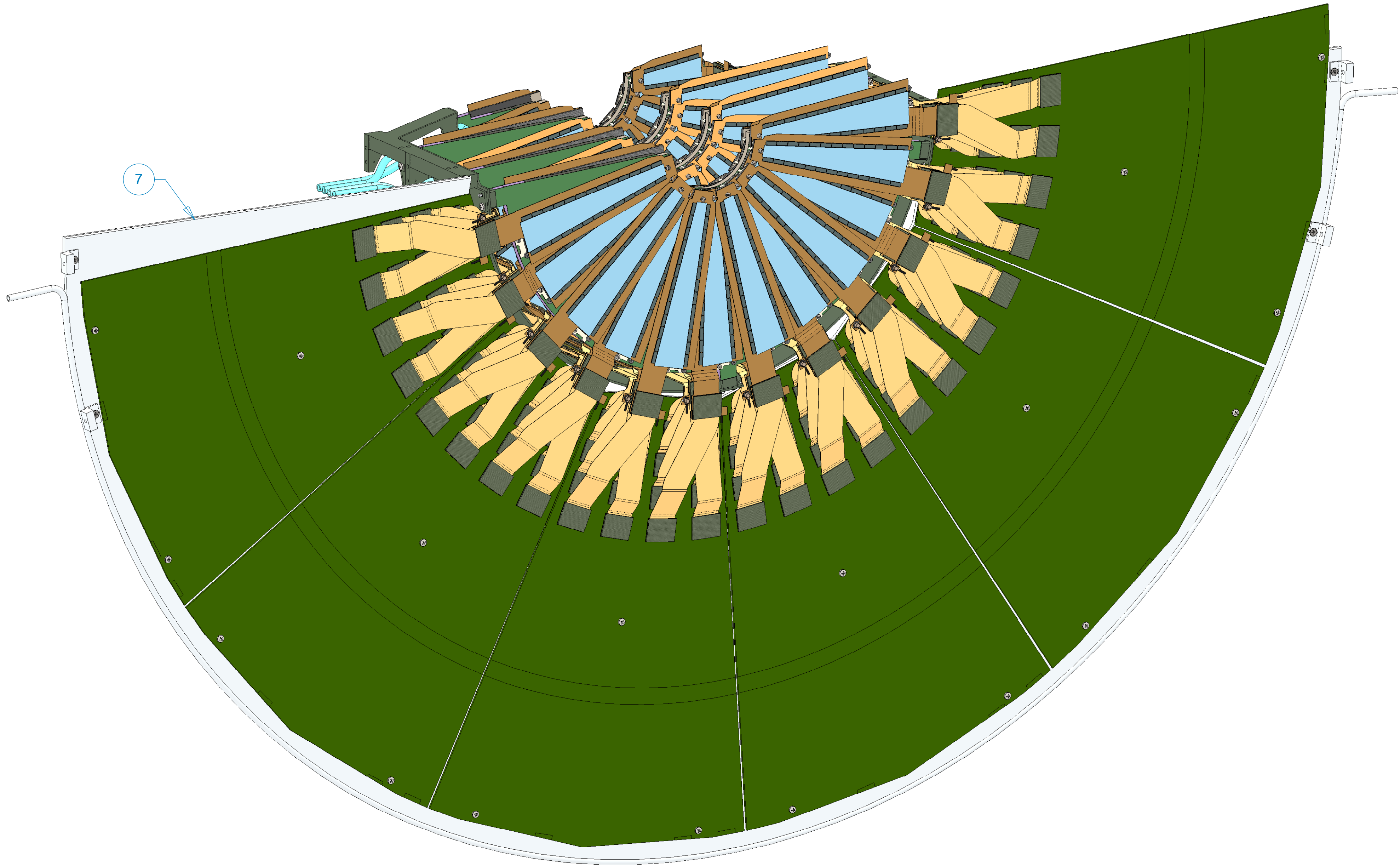
C

B

B

A

A



THIS DOCUMENT CONTAINS INFORMATION THAT IS THE PROPRIETARY PROPERTY OF HYTEC, INC.  
REPRODUCTION, DISCLOSURE, OR RELEASE TO OTHERS, MANUALLY OR ELECTRONICALLY,  
IS STRICTLY PROHIBITED WITHOUT THE PRIOR WRITTEN CONSENT OF HYTEC, INC.

UNLESS OTHERWISE SPECIFIED: DIMENSIONS ARE IN MILLIMETERS -TOLERANCES-		CAD GENERATED DRAWING. DO NOT MANUALLY UPDATE DO NOT SCALE DRAWING		<b><i>HYTEC, INC</i></b>	
				TITLE <b>PHENIX CENTRAL UPGRADE FVTX HALF-ARM ASSEMBLY</b>	
DECIMALS X = +/- .5 .X = +/- .1 .XX = +/- .01 .XXX = +/- .001		ANGULAR .X = +/- .30° .XX = +/- .15° SURFACE FINISH = 250		DESIGNER Roger L. Smith	DATE 8/14/2008
FINISH		SIGNATURE		DESIGNER Roger L. Smith	DATE 8/14/2008
PART NO. <b>111-PHX-02-3000-1</b>		CHECKED Walt Sondheim		ENGINEER RJ Ponchione	DATE 8/14/2008
		APPROVED Walt Sondheim		SCALE 1:2	REVISION

8 7 6 5 4 3 2 1